

*Inkjet Printer for Sublimation Transfer*

# ***TS200-1600***

**Dye-Sub** for textiles & customized good

- +22% wider colour gamut
- Fast production & Easy operation
- Built-in reliability



## ***Source Of Digital Solutions***

Welcome to Digital Star, your trusted partner in the world of cutting-edge printing solutions. As a leading printing machines, materials, and ink authorized dealer in The Kingdom of Saudi Arabia, we pride ourselves on delivering state-of-the-art technology that empowers to achieve unparalleled levels of efficiency and quality.

At Digital Star, we understand the pivotal role that printing machinery plays in the success of your operations. With a commitment to innovation and excellence, we curate a diverse range of top-tier printing machines to meet the unique needs of our clients. Our product line-up reflects the latest advancements in the industry.

As a responsible printing machines supplier, we prioritize sustainability. Our commitment to eco-friendly practices is reflected in the products we offer, promoting energy efficiency and environmentally conscious manufacturing processes. When you choose Digital Star, you're not just investing in cutting-edge technology – you're partnering with a company that values the planet as much as your success.

A vibrant, close-up photograph of various colorful fabrics, including a purple patterned scarf, a red fabric with a yellow and black geometric pattern, and a pink fabric with large grey polka dots. The fabrics are draped and folded, creating a rich, textured background.

***Best A Grade Quality &  
Innovative Products***



## Designed for Simplicity, Built for Expression

"TS200-1600" is a dye sublimation inkjet printer for textiles and apparel that enables even first-time users to easily achieve high-quality prints. A single high-density, high-resolution print head "330 Engine" which is used in our flagship printers is adopted in TS200 and can express uniform, beautiful high-concentration colors and intricate designs.

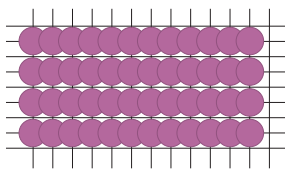


Features the flagship printer's '330 Engine' as a single unit  
Achieve Beautiful Solid Colors and Precise Design

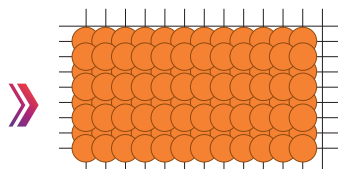
### Achieves outstanding quality with a high-resolution, high-definition print head

The minimum 4pl dot ejection allows for finely detailed expressions.

Conventional model



330 engine

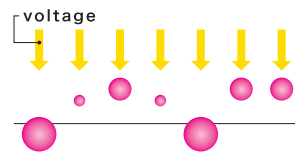


Increased dots per scan enable high image quality with fewer passes

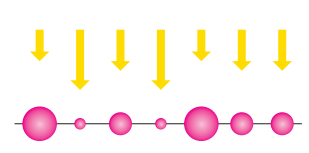
### Waveform control technology

Droplets with high circularity can be ejected to make them accurately land on the media.

Conventional waveform control



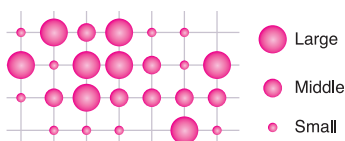
With 330 waveform control technology



Finish with minimal graininess

### Variable dot control

Various ink droplet sizes (large, medium, and small) are precisely placed.

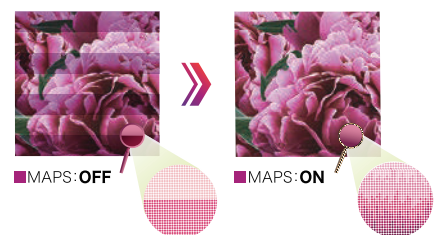


Controls different dot sizes

### MAPS

Prints path borders in a gradient tone to reduce banding and unevenness of colors.

### MAPS function image



## Now available with 8-color ink set

## Produces even More Beautiful and Vivid Colors

### ① Violet and Orange Inks Added to its lineup

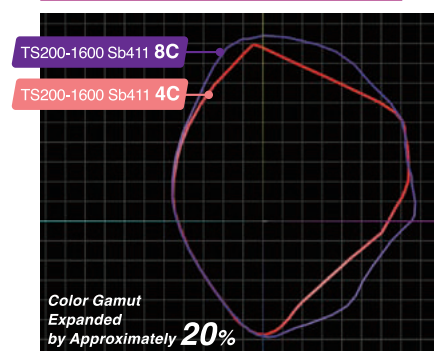
Reproduces rich blue-purple and vivid, well-defined orange tones. Enhances apparel and uniform designs for greater clarity.

### ② Enhanced concentration - Fluorescent pink and yellow

Ideal for creating eye-catching branding apparel and flags.



### Comparison of TS200-1600 with 4-color and 8-color ink sets



**Vi Violet**

The glossy texture adds a sense of luxury.



**Or Orange**

Vivid orange colors produced with high chroma.



TS200-1600 Sb411 8C  
600x600 4P Bi,Hi 24.5sqm/h

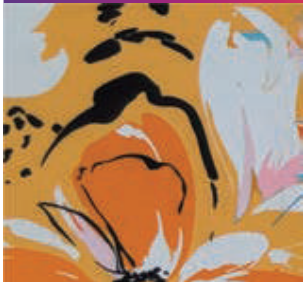


TS200-1600 Sb411 4C  
600x600 4P Bi,Hi 24.5sqm/h



With Violet ink, even bluish purples that typically appear muted in 4-color printing are rendered with brilliant and vivid intensity.

TS200-1600 Sb411 8C  
600x600 4P Bi,Hi 24.5sqm/h



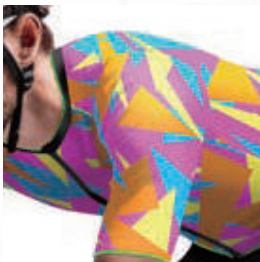
TS200-1600 Sb411 4C  
600x600 4P Bi,Hi 24.5sqm/h



Bright orange color that typically lose their brilliance are reproduced with striking vibrancy, and even delicate light tones are expressed with a smooth and refined finish.

**FP FY Fluorescent Pink and Yellow**

Compared to conventional fluorescent inks, the reflectance has been enhanced, enabling more vivid expression than ever before.



TS200-1600 Sb411 8C  
600x600 4P Bi,Hi 24.5sqm/h



TS330-1600 Sb411 6C+Sb410 FP/FY  
600x600 4P Bi,Hi 45sqm/h



Fluorescent Pink achieves a 10% increase in reflective density, while Fluorescent Yellow achieves a 24% increase.

\*Compared to conventional model

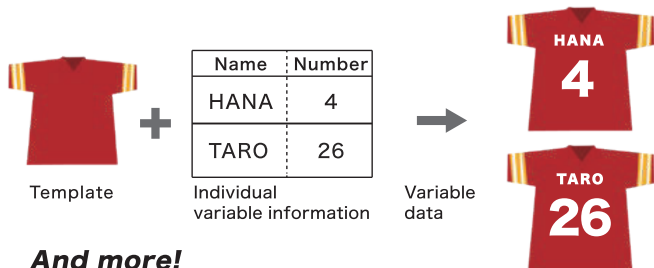




## Selectable software!

You can choose either RasterLink7 or TxLink5 Lite to best suit your needs.

// Prints out the variable data by variable print function



### And more!

- Improves reproducibility of special effects (such as transparency) of PDF data
- Frequently used settings are integrated into one screen, improving the ease of use.
- \* RasterLink7 supports using Violet, Orange and Flouroscent color ink as spot color  
For using special colors as process color, please select TxLink5

## Raster Link 7

Ease of use combined with advanced functionality

// Equipped with multiple convenient functions for textile production

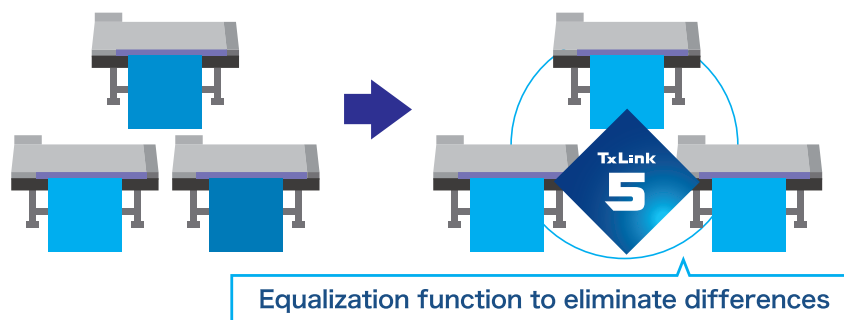
Color Replacement, Step & Repeat, Variable Print and Image Mask—provide full support for efficient uniform production.

// Improved productivity and convenience in environments with multiple connected printers

Efficient job allocation (Printer Pool) and equalized print density (Colour Equalizer) for environments with multiple connected printers, and exclusive license sharing (Floating Licensing).

## TxLink<sup>TM</sup>5 Lite

**Color Equalizer :** Ensures consistent print density, It adjusts the density across multiple printers to match the minimum density.



// Enhanced production history function

Integrated cost coefficient management: Cost Manager

**Cost Manager :** Integrated management of cost coefficients for Ink, media, and printer

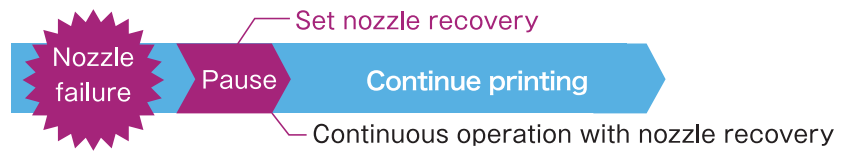
You can choose either /h or / m<sup>2</sup> as the unit for printer cost



## Support features keep your work running

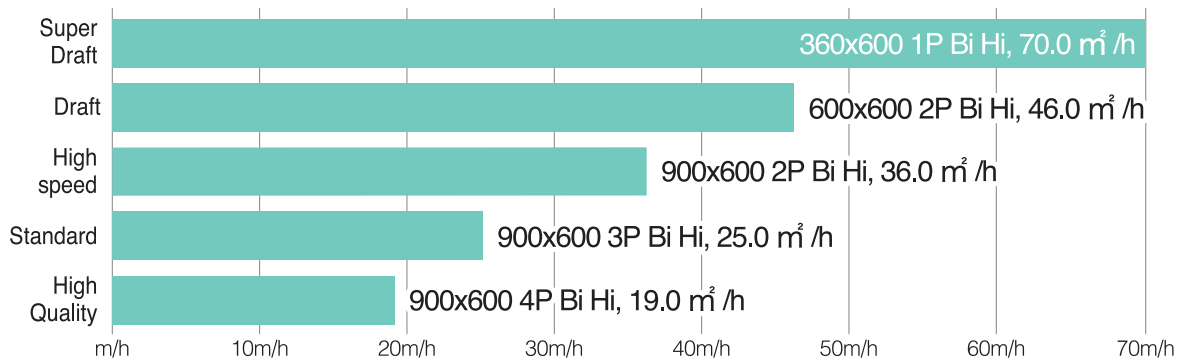
### NRS(Nozzle Recovery System)

If clogging is not resolved after cleaning, the NRS selects substitute nozzles to continue the printing operation.

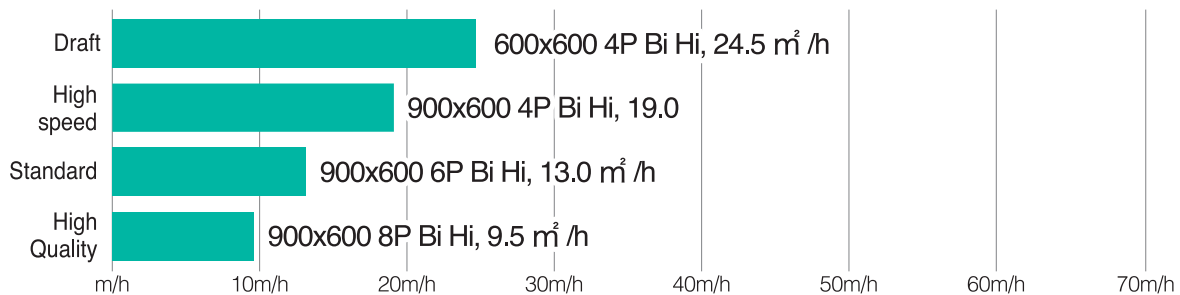


### Productivity

#### TS200-1600 4C



#### TS200-1600 8C



### // Reduce running costs with just two clicks

#### Ink-saving function \* Rastelink7 feature

Reduces ink consumption while maintaining color balance. Easy to use with no expertise required.

Standard Printing  
(Ink Save OFF) – ICC



Level 3  
(Approx. 30% Reduction) – ICC



### // Apps support efficient operations

#### Operate machines remotely



## MRA

(Mimaki Remote Access)

- Keep track of ink types and alerts instantly.
- Operate the machine remotely just like using the built-in panel.

#### Achieve smooth and planned operations

Mimaki Cloud  
Technology

## PICT

- Monitor printer operation status and ink usage.
- Enables proactive planning for maintenance schedules and ink refills.

## Specifications

Item		TS200-1600
Print head		On-demand piezo head
Print resolution		Y:300, 600, 900dpi X:600dpi
Maximum printable width		1,610 mm (63 in)
Media	Maximum width	1,620 mm (64 in)
	Thickness	1 mm or lower
	Roll diameter	φ180 mm or less *1
	Roll weight	25 kg (55 lb) or less *2
	Coer dia	2 inch or 3inch
Ink set		4color: BL, M, Y, K 8color: BL, M, Y, K, Vi, Or, FP, FY
Ink	Type	Sb411
	Capacity	2L ink pack
Interface		Ethernet 1000 BASE-T / (USB2.0 High-speed)
Power		Single phase AC100-120V/200-240V±10% 50/60Hz±1Hz
Power consumption		Max. 250 W or less
Operational Environment		Temperature : 20°C~30°C Humidity35~65%Rh (Non condensing)
Dimensions (W×D×H)		2,770×748×1,623 mm (109.1×29.4×63.9 in)
Weight		155 kg (341.7 lb)

\*1 :Maximum media take-up diameter, including slack from winding tension after printing.

\*2 :With the OPT-J0502 Level Foot attached, supports media up to 45kg(99.2lb).

## Supplies

Item		Item code	Remark
Dye sublimation (transfer) ink Sb411 ECO PASSPORT certified ink	Blue	SB411-BLT-2L	2L ink pack
	Magenta	SB411-MT-2L	
	Yellow	SB411-YT-2L	
	Black	SB411-KT-2L	
	Violet	SB411-VT-2L	
	Orange	SB411-ORT-2L	
	Fluorescent Pink	SB411-FPT-2L	
	Fluorescent Yellow	SB411-FYT-2L	
Flushing liquid 03		ML003-Z-K1	220 ml bottle

## Terms and Conditions

01. Payment to be made in SAR currency.
02. Payment Terms : As mentioned in Quotation.
03. Bank Charges: Any bank charges relevant to the above transactions will be to your account.
04. Any charges, duties, taxes or levies at the ports of entry will be to our account.
05. The charges of loading, boarding and local conveyance of the technician will be to our account.
06. Any required electrical, mechanical and civil site preparation should be done by the customer according to our engineer's requirements.
07. Digital Star Company will not be held responsible for delays caused by any damage in the equipment due to shipment, unloading accidents & any related reasons, which is beyond our control.
08. Warranty will be applicable as per our Warranty Policies. The Warranty will be valid after signing of Warranty Policies.
09. Service will be free of cost within 12 months from the date of installation.
10. Any claim will be invoice directly to you then we will send for claiming procedure which will take 45-60 days, if the claim got approved credit note will issued directly.
11. Delivery: As mentioned in quotation

شركة ديجيتال ستار  
DIGITAL STAR COMPANY

RIYADH | JEDDAH



+966 11 229 4473



info@digitalstarksa.com



+966 11 229 4473



www.digitalstarksa.com