

MATRIX LASER

# FIBER LASER MARKING MACHINE 200W

Unleash Precision and Power



MXL-A200FL

*Authorized Dealer*

شركة النجم الرقمي للألات و المعدات  
DIGITAL STAR MACHINERY AND EQUIPMENTS

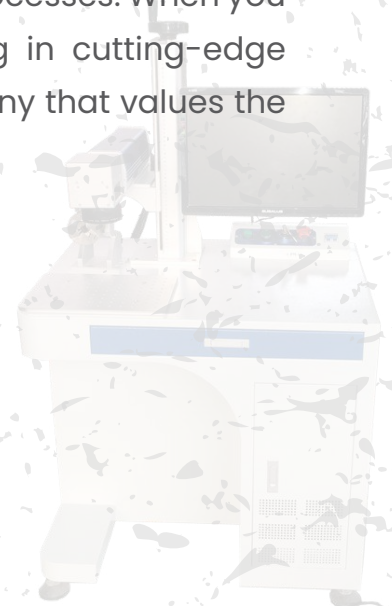
# About Us

## Source of Digital Solutions...

Welcome to Digital Star, your trusted partner in the world of cutting-edge printing solutions. As a leading printing machines, materials, and ink authorized dealer in Riyadh – Saudi Arabia (KSA), we pride ourselves on delivering state-of-the-art technology that empowers to achieve unparalleled levels of efficiency and quality.

At Digital Star, we understand the pivotal role that printing machinery plays in the success of your operations. With a commitment to innovation and excellence, we curate a diverse range of top-tier printing machines to meet the unique needs of our clients. Our product line-up reflects the latest advancements in the industry.

As a responsible printing machines supplier, we prioritize sustainability. Our commitment to eco-friendly practices is reflected in the products we offer, promoting energy efficiency and environmentally conscious manufacturing processes. When you choose Digital Star, you're not just investing in cutting-edge technology – you're partnering with a company that values the planet as much as your success.



## PRODUCT OVERVIEW

Matrix Fiber Laser Marking System offers excellent laser beam quality with the latest technology. Our pulsed fiber system delivers superior performance and reliability.

Providing an industrial solution for product identification and trace-ability, our Fiber Laser Marking Systems allow manufacturers to mark serial numbers, bar codes, 2D Data Matrix and graphics on the widest variety of metal materials, including steel, stainless steel, aluminum, etc.

## PRODUCT DESCRIPTION

- Fiber laser: The best Chinese fiber laser source Raycus brand; NO maintenance laser source; fiber laser working time is 100,000 hours.
- High speed galvo scanner: China domestic famous brand Sheng's galvo scanner, stable and fast speed.
- Easy Operate without route maintenance
- Higher precision, faster speed
- Air cooling: Small size, low power consumption
- Up and Down Lifter laser head(desktop) and up and down worktable (optional easy to marking engraving different workpiece)
- Rotary attachment: Diameter 80mm or rotary axis for ringfor optional
- High temperature resistance: perfect for marking medical equipment etc that requires sterilization
- The durability & Finer Marking quality: optimizes it for use in jewelry, mobile phones, and other items of value.
- User friendly interface, easy operation set and deal different layers graphic in separate.Support PLT,PCX, AL, DXF, BMP, JPG formats file compatible AutoCAD, CorelDraw, Photoshop etc software Automatic serialization, date coding letter, symbol, pattern, figure, image, bar code, 2D code auto arrangement and amendment.
- Red light preview: show the marking position before marking.
- Laptop Computer included with Free Powerful software.

## MARKING MATERIALS

### Both metals and some non-metals:

Metals: carbon steel/mild steel, stainless steel, aluminum, copper, magnesium, zinc; rare metal and alloy steel (gold,silver, titanium, etc.); special surface treatment (aluminum anodized, plating surface, surface oxygen breaking of aluminum and magnesium alloy) Non-metals: plastics, rubber, resin, carton box, etc.

## APPLIED INDUSTRIES

Electronic components, IC, electrical appliances, mobile phones, plastic buttons, color paper, food packaging, clocks and watches, molds, gaskets and seals, bearing, auto parts,hardware, tools, building materials, PVC tubes, etc.

# FIBER LASER MARKING MACHINE DETAIL SHOW





## The best Original JCZ control card (EZCAD design software)

- The JCZ original control card is the best controller for the laser making machine. Its biggest advantage is its stable performance. It supports rotary axis marking

## Sino-Galvo Galvanometer Scanning Head

- The best brand Sino-Galvo Galvanometer scanning head in China. It greatly reduce the delay and improve the marking speed.



## Field Lens

- The field lens by focusing the beam, a high energy density focus produced for marking. The advantage of the field lens is the spot is small, the processing is fine, and the spot is round and round. The wave length is 1064nm. The standard field lens is 110\*110mm, we have bigger till to 300\*300mm for option too.

## Ruler

- The number on the ruler are clear and accurate. It is used to indicate the correct position for marking.



## Lifting shaft

- The lift shaft is for adjusting the focus. By adjusting the focus to the right position that best suits the marking.

## Working table

- The working table is aluminum alloy. It is compact structure & the processing direction is flexible and adjustable



## Foot switch

- The foot switch greatly facilitates the marking work.

## Control button

- It is very convenient to control the machine with the control buttons. Buttons include switches, emergency stops, and more. It is also safer to lock the machine with a key when the machine is not in use.



## Wheels

- Every machine is equipped with castor wheels to make it easier to move it around the workshop or office. While the castor wheels are great for moving the laser machine around the building, the laser machine also equipped with leveling pads. The leveling pads should be used for long term stabilization of the laser machine.

## OPTIONAL PARTS



### 80mm Diameter Rotary Axis

- The rotary axis is for making the cylindrical shape material, such as the bottle, the valve, etc. The diameter is 80mm



### Rotary Axis for ring

- The rotary axis is for marking on the ring.



### XY 2D table

- Size: 220\*300mm
- Stroke: X=150mm Y=90mm
- Positioning hole: m6
- hole spacing: 25mm

## FIBER LASER MARKING MACHINE 200W

THE PINNACLE OF QUALITY, THE KING OF FUNCTIONS



# PRODUCT SAMPLES





# PRODUCT SPECIFICATION

Model	Fiber Laser Marking Machine 200W
Laser Power	200W
Laser device	JPT fiber laser generator(CAS/MAX/IPG for optional)
	Lifetime >100,000 hours
Optical maser wavelength	1064nm
Beam Radiation Angle	≤2mrad
Modulation frequency range	20KHz~80KHz
Working Environment	Clean and dust free or dust less
Maximum speed	7000mm/s
Resolution	0.001mm
Repeat location accuracy	0.003mm
Marking range	300*300mm
Working table	PIAFMorm table (2 dimensional table for option)
Minimum line width	30um
Minimum character height	0.2mm
Laser power supply	<800W / 220V / 50Hz(or 110v for optional)
Maximum speed	7000mm/s
Cooling mode	Air cooled
Environmental Requirement	0~45°C,humidity≤90%
Graphic Format Supported	bmp,jpg,gif,tga,ai,dxf,dst,plt,etc.

\*Specifications are subject to change without prior notice, all rights reserved.

## Terms and Conditions

01. Payment to be made in SAR currency.
02. Payment Terms : As mentioned in Quotation.
03. Bank Charges: Any bank charges relevant to the above transactions will be to your account.
04. Any charges, duties, taxes or levies at the ports of entry will be to our account.
05. The charges of loading, boarding and local conveyance of the technician will be to our account.
06. Any required electrical, mechanical and civil site preparation should be done by the customer according to our engineer's requirements.
07. Digital Star Machinery and Equipments will not be held responsible for delays caused by any damage in the equipment due to shipment, unloading accidents & any related reasons, which is beyond our control.
08. Warranty will be applicable as per our Warranty Policies. The Warranty will be valid after signing of Warranty Policies.
09. Service will be free of cost within 12 months from the date of installation.
10. Any claim will be invoice directly to you then we will send for claiming procedure which will take 45-60 days, if the claim got approved credit note will issued directly.
11. Delivery: As mentioned in quotation

## شركة النجم الرقمي للألات و المعدات DIGITAL STAR MACHINERY AND EQUIPMENTS

IBN AL SAQA 8162 | AS SALHIYAH DIST | RIYADH - 12662



+966 11 229 4473



info@digitalstarksa.com



+966 11 229 4473



www.digitalstarksa.com