

## Pro9431dn



**A3 colour printer for professional quality output and unrivalled media flexibility**

Designed to meet the needs of the graphic arts and creative industries with the versatility to serve general office requirements, the Pro9431 delivers vibrant, high-quality color printing on a wide range of media, including gloss paper, film, transfer paper & waterproof paper.

A3/A4	✓
Colour/Mono	✓
Prints A6 to 1321mm, up to 360gsm	✓
1 - 30+ users	✓



Authorized Dealer:

شركة النجم الرقمي للألات و المعدات

DIGITAL STAR MACHINERY AND EQUIPMENTS

# Source of Digital Solutions

Welcome to Digital Star, your trusted partner in the world of cutting-edge printing solutions. As a leading printing machines, materials, and ink authorized dealer in Riyadh – Saudi Arabia (KSA), we pride ourselves on delivering state-of-the-art technology that empowers to achieve unparalleled levels of efficiency and quality.

At Digital Star, we understand the pivotal role that printing machinery plays in the success of your operations. With a commitment to innovation and excellence, we curate a diverse range of top-tier printing machines to meet the unique needs of our clients. Our product line-up reflects the latest advancements in the industry.

As a responsible printing machines supplier, we prioritize sustainability. Our commitment to eco-friendly practices is reflected in the products we offer, promoting energy efficiency and environmentally conscious manufacturing processes. When you choose Digital Star, you're not just investing in cutting-edge technology – you're partnering with a company that values the planet as much as your success.



# The compact colour printer, with massive performance

An ideal printer for graphic arts and creative industries, the versatile, Pro9431 also serves as a high-performance general office printer. Built to offer essential levels of high-quality output, the Pro9431 A3 colour printer delivers vibrant, high-definition colour printing on a wide range of media, including gloss paper, film, transfer paper & waterproof paper, with fast printing speeds and high-quality output.

## Professional print quality in-house

Commercial print quality to handle all types of print requirements

## Unrivalled media flexibility

Endless opportunities from general office design review to proofing and signage applications

## Cost-efficient productivity

One of the fastest A3 printers in its class at a low total cost of ownership

## One printer, multiple uses

A perfect printer for office and creative requirements

### Professional print quality in-house – Commercial print quality to handle all types of print requirements

Digital LED technology and Multi-Level ProQ technology produce high-definition printing in the sharpest & some of the most vibrant print output available, making the Pro9431 an ideal solution for creative agencies, design teams and marketing departments.

- A4/A3/A3+ four colour printer
- Superb print resolution of 1200 x 1200dpi
- Multi-Level ProQ technology enhances colour print output

### Unrivalled media flexibility – Endless opportunities from general office design review to proofing and signage applications

From high-colour page proofs to creative design, the advanced media flexibility delivered by the Pro9431 takes in-house printing to a new level.

- Wide paper handling from A6 to SRA3 and banner lengths up to 1.3m
- Print on paper stock up to 360gsm single sided and 320gsm duplex
- Prints on a wide range of media including gloss paper, film, transfer paper, waterproof paper and more



### Cost-efficient productivity –

#### One of the fastest A3 printers in its class at a low total cost of ownership

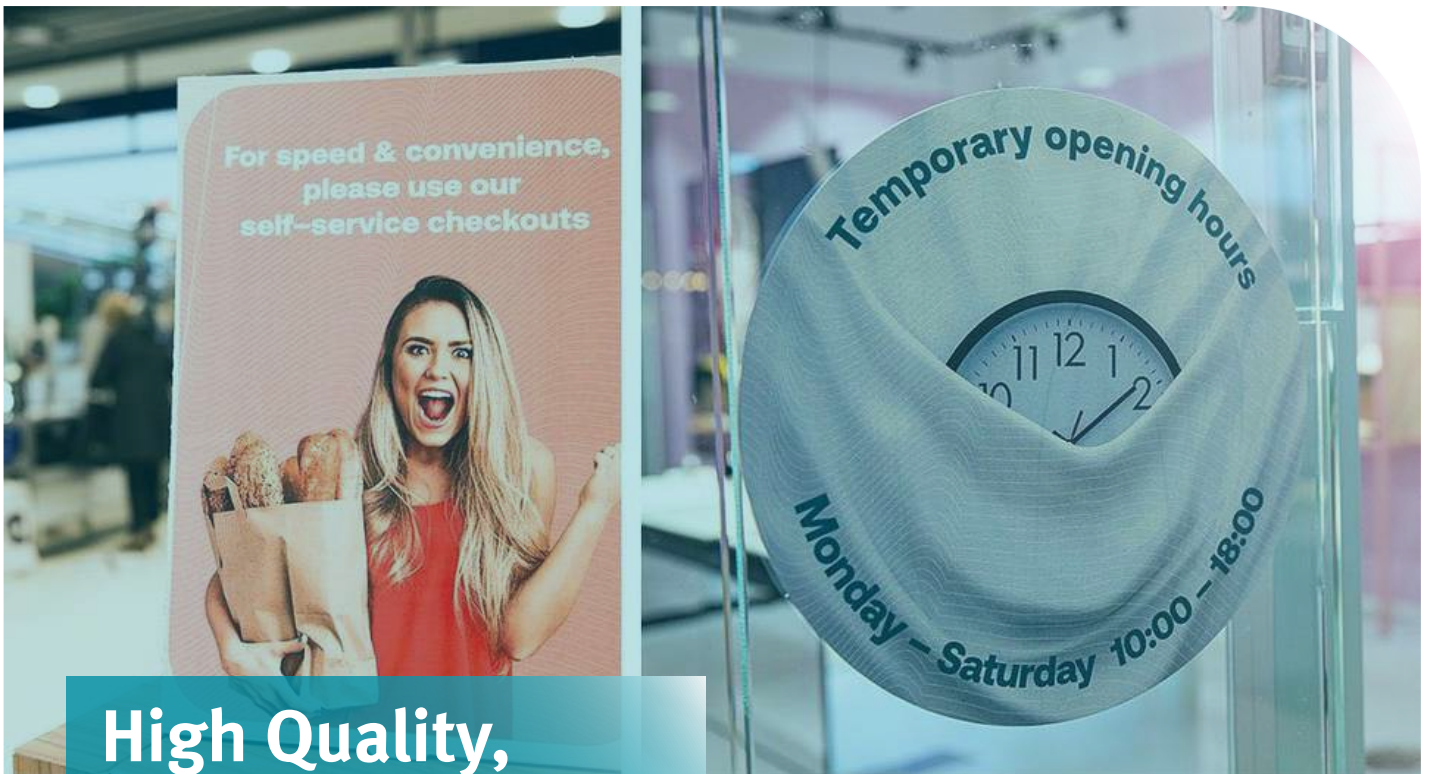
Combining essential levels of high-quality output, high print speeds and advanced paper handling, the Pro9431 is a perfect partner for all kinds of in-house printing.

- High print speeds of up to 50ppm colour/mono; 28ppm A3, less than 8 seconds to first print
- 2GB RAM and 1.2GHz processor for rapid throughput
- Best in class price/performance ratio

### One printer, multiple uses – A perfect printer for office use and creative printing

Cost-effective with ultra-high capacity toner cartridges, the versatile Pro9431 is an ideal office printer for day-to-day use, saving cost for creative agencies by eliminating the need for separate graphic arts and office printers or the need to outsource to a print house.

- 830 sheet standard paper capacity (up to 2,950 sheets)
- Robust 300 sheet multi-purpose tray for added flexibility
- Duplex printing as standard



**High Quality,  
High Performance**



# Product Specification

## PRINTER

<b>Print speed</b>	<b>A4:</b> 50ppm colour, 50ppm mono; <b>A3:</b> 28ppm colour, 28ppm mono
<b>Time to first print</b>	8 seconds colour, 8 seconds mono
<b>Warm up time</b>	50 seconds or less from power on
<b>Processor speed</b>	1.2GHz

## INTERFACE AND SOFTWARE

<b>Connectivity</b>	Hi-Speed USB 2.0, 10Base-T/100Base-TX/1000Base-T
<b>Printer languages</b>	PCL5c, PCL6 (PCL XL), Adobe PostScript 3 with direct PDF Printing (v1.7), XPS, SIDM
<b>Network &amp; protocols</b>	All major network protocols supported via ethernet card with internal web server for printer and network card set-up and management. TCP/IP: IPv4/v6, ICMP, ICMPv6, IGMP, IGMPv2, LPR, Port9100, IPP, IPPS, FTP, FTP over SSL, HTTP, HTTPS, TELNET, IPP, Auto IP, LLTD, BOOTP, DHCP, SNMPv1/v3, SNMP Trap, DNS, DDNS, UPnP, Bonjour, WINS, SSL/TLS, SMTP, SMTP over SSL, POP3, SNTP, JCDP, FLDP, ODNTP, WSDPrint, WSD-Discovery, Web JetAdmin, NetBIOS over TCP, EtherTalk
<b>OS Compatibility</b>	Windows Vista (32-bit & 64-bit) / XP (32-bit & 64-bit) / Server 2003 (32-bit & 64-bit) / Server 2008 (32-bit & 64-bit) / Server 2008 R2 (64-bit) / Windows 7 (32-bit & 64-bit) / Server 2012 (64-bit) / Windows 8 (32-bit & 64-bit); Mac OS9 / OS X 10.3.9 - 10.9
<b>Advanced networking and security</b>	IPv6, 802.1x authentication, SMTP Server Authentication, SNMPv3, SSL3/TLS encryption, HTTPS encryption, Protocol On/Off, Protocol Port No. Change, MAC filtering, IP filtering, IP Sec, EAP-PEAP, EAP-TLS, Secure Erase , Secure Print , Secure Print Job Encryption , Storage Devices entire Encryption , Storage(HDD) Initialize (format)
<b>Utility suite</b>	Print Job Accounting , Print Job Accounting Enterprise , Print Job Accounting Client, PrintSuperVision.net , Template Manager , Color Correct, Color Swatch , Configuration Tool, PS Gamma Adjuster, Profile Assistant (Mac Only), PDF Direct Print, EFI Fiery XF Server Option (External color management server).

## TYPEFACES

<b>Printer fonts</b>	87 scalable PCL fonts, Lineprinter/OCR-A/OCR-B/USPSZIP bit-map fonts, 10 TrueType fonts, 136 Adobe PostScript Type 1 fonts
<b>Barcode</b>	UPC-A, UPC-E, EAN/JAN-8, EAN/JAN-13, Interleaved 2of5, Code39, Code128, EAN/UCC-128, CODABAR, ZIP+4 POSTNET: PDF417/QR code 2D barcodes

## PRINT QUALITY

<b>Resolution</b>	ProQ4800 Multi-level technology, 1200 x 1200dpi
<b>Enhancements</b>	Auto Colour Balance, Auto Registration, Auto Media Detect

## PAPER HANDLING

<b>Paper capacity</b>	Tray 1: 530 sheets of 80gsm; Multi-purpose tray: 300 sheets of 80gsm
<b>Paper capacity optional trays</b>	Tray 2: 530 sheets of 80gsm; Tray 3: 530 sheets of 80gsm; High Capacity Feeder: 1,590 sheets of 80gsm
<b>Maximum paper capacity</b>	2,950 sheets of 80gsm
<b>Paper sizes</b>	Tray 1/2/3: A3, SRA3 (up to 330 x 457mm), SRA4, A4, A5, A6, B4, B5, B6; Multi-purpose tray: A3, SRA3, SRA4, A4, A5, A6, B4, B5, B6 Custom size: Width 64 - 330mm Length 89 - 1,321mm; High Capacity Feeder: A3, SRA3 (up to 328 x 457mm), SRA4, A4, A5, A6, B4, B5, B6
<b>Paper weight</b>	Tray 1/2/3: 52 to 320gsm; Multi-purpose tray: 52 to 360gsm; Duplex: 64 to 320gsm; High Capacity Feeder: 52 to 320gsm
<b>Duplex</b>	Standard
<b>Paper output</b>	610 sheets face down tray, 300 sheets face up tray

## OPERATOR PANEL

<b>Display</b>	10.9cm Colour Graphic LCD (480x272 dots)
----------------	--

## GENERAL FEATURES

<b>Memory</b>	<b>Standard RAM: 2GB; Maximum RAM: 2GB</b> <b>Optional Hard Disk Drive: 160GB</b>
<b>Environment</b>	<b>Operating temperature/humidity:</b> 10°C to 32°C (17°C to 27°C recommended) / 20% to 80% RH (50% to 70% RH recommended) <b>Storage temperature/ humidity:</b> -10°C to 43°C, 10% to 90% RH
<b>Power supply</b>	Single phase 230V AC +/-10%, frequency 50/60Hz +/- 2%
<b>Power consumption</b>	<b>Typical:</b> 1100W; <b>Max:</b> 1600W; <b>Idle:</b> 40W (average); <b>Power Save:</b> <34W; <b>Deep Sleep:</b> <4W; <b>Off Mode:</b> <0.5W
<b>Noise level</b>	<b>Operating:</b> 57dB(A); <b>Standby:</b> 34dB(A) or less; <b>Power save:</b> Inaudible
<b>Dimensions (HxWxD)</b>	640 x 699 x 625mm
<b>Weight</b>	97.6kg
<b>Duty cycle</b>	<b>Average:</b> 25,000 pages/month; <b>Maximum:</b> 300,000 pages/month

## CONSUMABLES

<b>Toner cartridge* (42,000 pages)</b>	<b>Cyan:</b> 45536555; <b>Magenta:</b> 45536554; <b>Yellow:</b> 45536553
<b>Toner cartridge* (51,000 pages)</b>	<b>Black:</b> 45536556
<b>Image drums** (40,000 pages)</b>	<b>Cyan:</b> 45103721; <b>Magenta:</b> 45103720; <b>Yellow:</b> 45103719; <b>Black:</b> 45103722
<b>Transfer Belt (150,000 pages)</b>	45531213
<b>Fuser Unit (150,000 pages)</b>	45531113
<b>Waste Toner Box (40,000 pages)</b>	45531503

## SYSTEM REQUIREMENTS (PC's)

<b>Operating System*</b>	Windows 10 (64 Bit) or Later
<b>Processor</b>	i7 - 2.6 GHz or faster
<b>Memory (RAM)</b>	Min. 8GB or More
<b>Video Card and Monitor(VGA)</b>	1280x1024 or Higher Resolution is Recommended
<b>Working Hard Disk Space</b>	1 TB SSD or more recommended
<b>Graphics Card</b>	2GB or more (Optional)
<b>Optical drive</b>	DVD-ROM
<b>Other requirements</b>	Ethernet connection for network capable printers
	Available USB ports and PCIE Slot
<b>Recommended Brand</b>	Lenovo / Dell

\* Note: You can use a laptop or desktop computer

\* Use the original operating system and software. If you are using pirated operating system or software, we are not responsible for any damage to Machine workings, and also the warranty terms will become void.



## Terms and Conditions

01. Payment to be made in SAR currency.
02. Payment Terms : As mentioned in Quotation.
03. Bank Charges: Any bank charges relevant to the above transactions will be to your account.
04. Any charges, duties, taxes or levies at the ports of entry will be to our account.
05. The charges of loading, boarding and local conveyance of the technician will be to our account.
06. Any required electrical, mechanical and civil site preparation should be done by the customer according to our engineer's requirements.
07. Digital Star Machinery and Equipments will not be held responsible for delays caused by any damage in the equipment due to shipment, unloading accidents & any related reasons, which is beyond our control.
08. Warranty will be 12 months from the date of installation from Digital Star Machinery and Equipments. Wear and tear, consumables are exempted and warranty can be claimed only if you use the Inks and Services from Digital Star Machinery and Equipments.
09. Service will be free of cost within 12 months from the date of installation.
10. Any claim will be invoice directly to you then we will send for claiming procedure which will take 45-60 days, if the claim got approved credit note will issued directly.
11. Delivery: As mentioned in quotation

## شركة النجم الرقمي للألات و المعدات DIGITAL STAR MACHINERY AND EQUIPMENTS

IBN AL SAQA 8162 | AS SALHIYAH DIST | RIYADH - 12662



+966 11 229 4473



info@digitalstarksa.com



+966 11 229 4473



www.digitalstarksa.com