

Mimaki
AUTHORISED PARTNER

Tiger600-1800TS

Hide-Speed Sublimation

Sustainable Fabric Printing Solution

EXPERT PRINTING
MADE EASY



Fabric
Printer

Width: 1.8m

شركة النجم الرقمي للألات و المعدات

DIGITAL STAR MACHINERY AND EQUIPMENTS

SOURCE OF DIGITAL SOLUTIONS

Welcome to Digital Star, your trusted partner in the world of cutting-edge printing solutions. As a leading printing machines, materials, and ink authorized dealer in Riyadh – Saudi Arabia (KSA), we pride ourselves on delivering state-of-the-art technology that empowers to achieve unparalleled levels of efficiency and quality.

At Digital Star, we understand the pivotal role that printing machinery plays in the success of your operations. With a commitment to innovation and excellence, we curate a diverse range of top-tier printing machines to meet the unique needs of our clients. Our product line-up reflects the latest advancements in the industry.

As a responsible printing machines supplier, we prioritize sustainability. Our commitment to eco-friendly practices is reflected in the products we offer, promoting energy efficiency and environmentally conscious manufacturing processes. When you choose Digital Star, you're not just investing in cutting-edge technology – you're partnering with a company that values the planet as much as your success.

***Best A Grade Quality &
Innovative Products***

Tiger600-1800TS

Unparalleled productivity !

**Next-Generation Tiger :
Unparalleled Productivity
and Superior Image Quality**

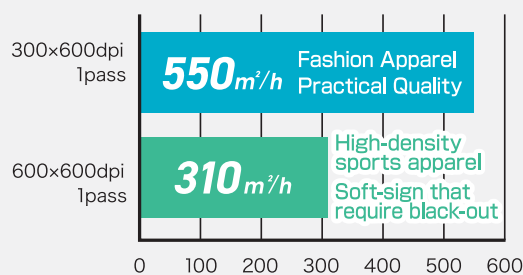
Print Speed
Max. 550 m²/h



Mimaki's Original technology and mechanism design, together with a new high-speed drive design, together with a new high-speed drive print head. The new (Tiger) was born with high productivity and imagine quality, setting the stage for the future of digital textile printing.

Tiger600-180TS with Mimaki's accumulated technologies, embodies practical image quality and productivity for textile and fashin applications. It is a product that brings you to the world of sustainable deigital textile printing

Recommended Print Speed (by applications)



Above are expressions based on internal evaluations and are not guaranteed for all applications

Smart design !

Space-Saving and Light weight Design for Easier Insatallation

Both transfer paper set-up and take-out can be performed from one-side

- Operation footprint reductions: Approx. 50% vs previous mod
- Product weight reductions: Approx. 80% vs previous model

Greatly easing installtion location restrictions

- Easier for customer to install the system



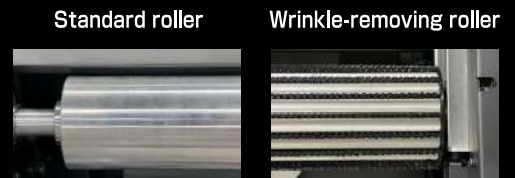
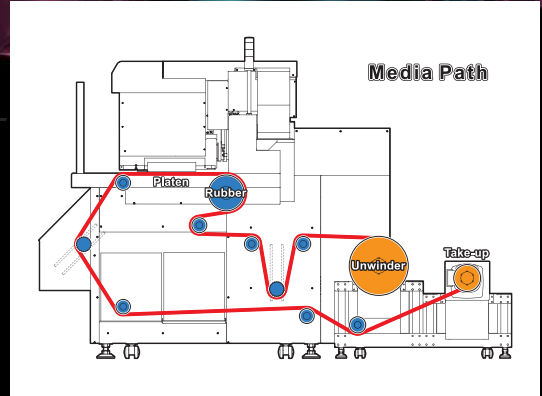
The Mimaki's Tiger series is reborn with a maximum speed of 550 sqm/h
Embracing the digital printing era - paving the way to a sustainable textile industry

New design !

Advanced Transfer Paper Transport Mechanism Stable Printing even with Thin Transfer Paper!

The Tiger600-1800TS features a newly designed wrinkle-removing roller within its transport system.
Previously, transport tension-induced wrinkles on the transfer paper led to cockling, causing the print head to touch the paper.

The newly designed roller allows wrinkles to escape when transport tension is applied, effectively preventing any contact between the print head and the transfer paper.
Ensuring stable transport of thin paper helps reducing running cost.



Light Curtain

Detects obstructions and halts printing to prevent accidents

Wrinkle-Removing Roller

Reduces wrinkles of transfer paper due to transport tension. Smooth transport of thin transfer paper is supported.

Print Carriage

8-print head array achieves high productivity

Maintenance Switch

Switches Printing-Mode/ Maintenance-Mode

Operation Software

Printer operation and production directive performed from the touch panel.
*Please prepare a PC for RIP software (Sold Separately)

Dryer Unit

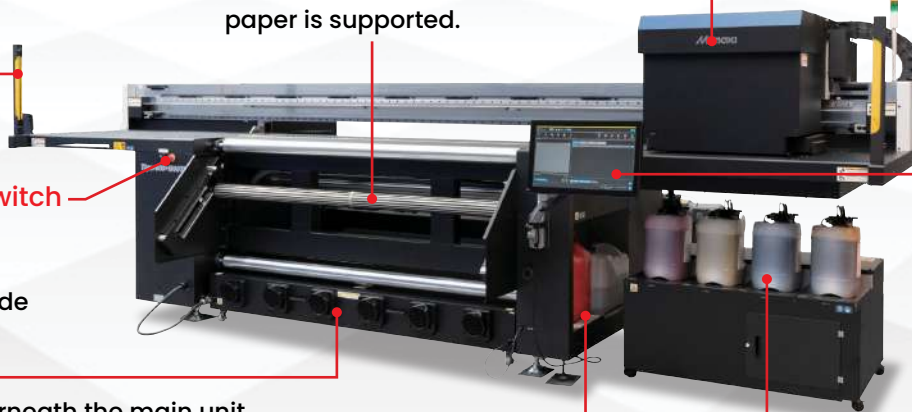
Placed underneath the main unit, Contributes to space-saving

Purified Water for Automatic Maintenance

*Please make your own preparations

10Kg Ink Tank Supply Unit & Internal Buffer Tank

Ink Tank can be replaced during printing operation. In addition the ink circulation function automatically agitates the ink in the system, contributes to less maintenance time and stable operation.



Take-up/ Unwind Unit (Rear Section)

Transfer paper loading/ Unloading from one side.
Significant space saving for operation



Continuous production!

Ink System Design and Support Functions for Continuous and Stable Production

A new ink system during implemented to reduce the risk of nozzle dropout operation. the syetem is also equipped with support functions to ensure that customers can continue working even in the event of nozzle clogging

NRS: Nozzle Recovery System

Even when head cleaning does not clear nozzle clog, productivity can be maintained.

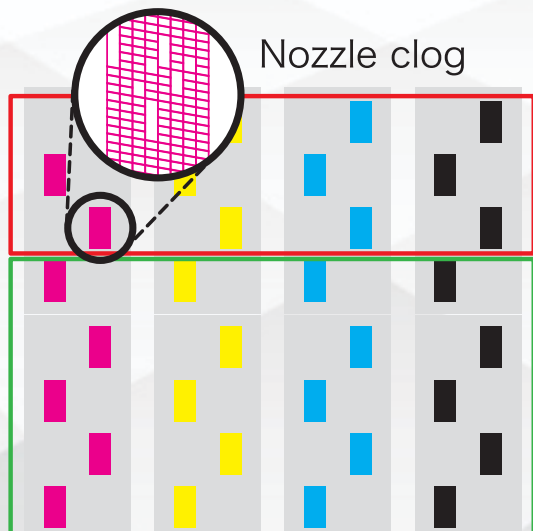


*Recovery may not work depending on nozzle clog position

Head Select Function

The Print process can be continued using the avaiable range of print heads when large number of nozzles are clogged.

*Recovery may not work depending on nozzle clog position



Unusable print head range

Usable print head range

Without head select



When using head select





Shape Your Expression as Desired with Ultra-Safe Eco Sublimation Transfer Ink and Specialized Textile Software

High density and wide color gamut MLSb510, delivers vivid and striking results

MLSb510 is also safe and environment friendly, boasting ECO PASSPORT certification, and is currently undergoing ZDHC MRSL Lv.3 adoption



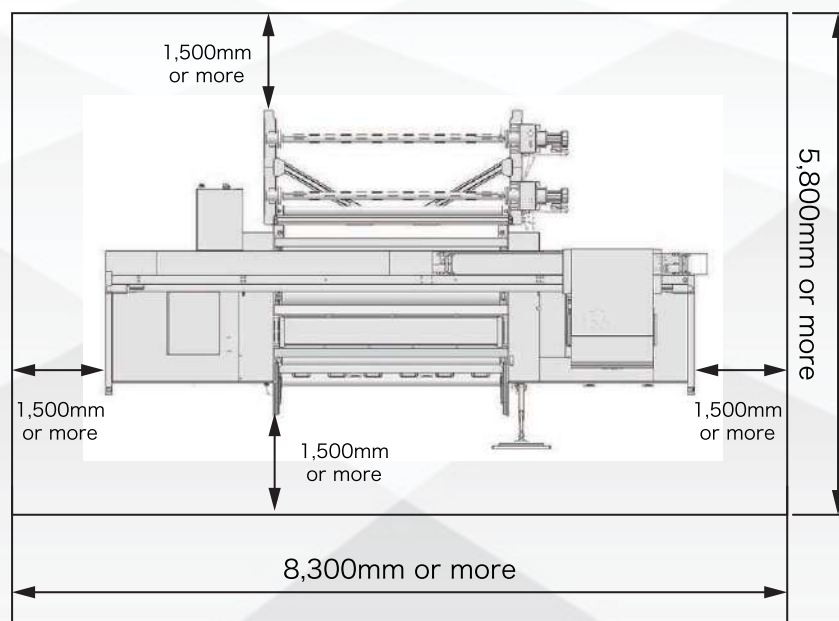
Highly Safe Eco Sublimation Transfer Ink

MLSb510

More Advanced Textile RIP Software for Professional Use

TxLink4™

- Parallel RIP functionally improves work efficiency
- Smoother gradients with 16-bit rendering
- Easy nesting operation saves media etc. Nesting functions to suit your application
- Variable data print function ideal for sportswear
- Image masking process is possible within TxLink4 rendered and reproduced



Entering within 1 meter of perimeter is extremely dangerous during the production

Product Samples



FASHION



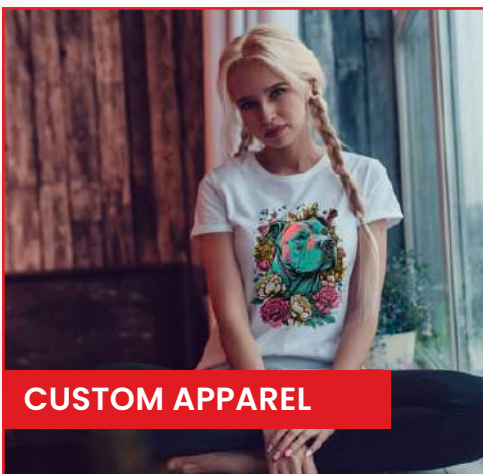
SOFT SIGNAGE



HOME FURNISHING



PROMOTIONAL ITEMS



CUSTOM APPAREL



SPORTS WEAR

Product Samples

Specification

Print Head		On-demand piezo head
Number of print head		8 Units (4 in-lined x 2 staggeted layout)
Print Resolution		300dpi, 600dpi
Maximum Print Width		1,850mm (72.8")
Minimum Print Width		210mm (8.3")
Maximum Media Width		1,900mm (74.8")
Paper Core Diameter		600mm or less (23.6")
Media Weight		300kg or less (661.4lb)
Ink	Type/Colors	Sublimation Transfer MLSb510 (Bl/M/Y/K)
	Content	10Kg Ink Tank
Interface		Ethernet 10GBASEPT
		USB 2.0 (Removable Disk)
Operation method Operation software		Built-in Touch Panel
		Exclusive Software MPC (Mimaki Print Controller)
RIP Software		TxLink4 Standard/ Professional
Compatible Standards		ETL compliant with IEC62368-1, CE marking (EMC Directive, Low
		Voltage Directive, Machinery Directive) CB certification / RoHS /
		REACH / RCM / KC certification / UKCA
Operational Environment	Power	3φ 380-415V ± 5%, 50/60Hz ± 1%, 25A
	Temperature	20-30 degC / 68-77 degF
	Humidity	35 - 65% Rh (Non condensing)
	Dust level	0.15mg/m ³ or less (Equivalent to a general office floor level)
	Maximum	
	operating altitude	2,000m
Power Consumption	Max. operating	15.0kW or less
	Standby	1.0kW or less
Dimensions (W×D×H)		5,300x2,800x1,900mm (209x110x75")
Weight		1,620kg or less (≤3,572 lb.)

*Specifications, designs & dimensions in this list may be subject to change without notice due to technical improvements or other modifications.

SUPPLY ITEMS

Subliamtion Transfer Ink MLSb510	Blue	MLS51-BLT-BJ	10 kg Ink Tank
	Magenta	MLS51-MT-BJ	
	Yellow	MLS51-YT-BJ	
	Black	MLS51-KT-BJ	
Maintenance Liquid	ML03 Bottle	ML003-Z-K1	200ml Bottle

SYSTEM REQUIREMENTS (PC's)

Operating System*	Windows 10 (64 Bit) or Later
Processor	i7 - 2.6 GHz or faster
Memory (RAM)	Min. 8GB or More
Video Card and Monitor(VGA)	1280x1024 or Higher Resolution is Recommended
Working Hard Disk Space	1 TB SSD or more recommended
Graphics Card	2GB or more (Optional)
Optical drive	DVD-ROM
Other requirements	Ethernet connection for network capable printers
	Available USB ports and PCIE Slot
Recommended Brand	Lenovo / Dell

* Note: You can use a laptop or desktop computer

* Use the original operating system and software. If you are using pirated operating system or software, we are not responsible for any damage to Machine workings, and also the warranty terms will become void.

POWER REQUIREMENTS

Voltage Regulator	5000W Stabilizer
-------------------	------------------



Terms and Conditions

01. Payment to be made in SAR currency.
02. Payment Terms : As mentioned in Quotation.
03. Bank Charges: Any bank charges relevant to the above transactions will be to your account.
04. Any charges, duties, taxes or levies at the ports of entry will be to our account.
05. The charges of loading, boarding and local conveyance of the technician will be to our account.
06. Any required electrical, mechanical and civil site preparation should be done by the customer according to our engineer's requirements.
07. Digital Star Machinery and Equipments will not be held responsible for delays caused by any damage in the equipment due to shipment, unloading accidents & any related reasons, which is beyond our control.
08. Warranty will be 12 months from the date of installation from Digital Star Machinery and Equipments. Wear and tear, consumables are exempted and warranty can be claimed only if you use the Inks and Services from Digital Star Machinery and Equipments.
09. Service will be free of cost within 12 months from the date of installation.
10. Any claim will be invoice directly to you then we will send for claiming procedure which will take 45-60 days, if the claim got approved credit note will issued directly.
11. Delivery: As mentioned in quotation

شركة النجم الرقمي للألات و المعدات DIGITAL STAR MACHINERY AND EQUIPMENTS

IBN AL SAQA 8162 | AS SALHIYAH DIST | RIYADH - 12662



+966 11 229 4473



info@digitalstarksa.com



+966 11 229 4473



www.digitalstarksa.com