

# CJV150-75

High-Specification Entry Model

Affordable, Integrated  
Printer/Cutter...

VERSATILE PRINT &  
CUT FUNCTION



Print  
and Cut

Width: 0.8 m

شركة النجم الرقمي للألات و المعدات

DIGITAL STAR MACHINERY AND EQUIPMENTS

# SOURCE OF DIGITAL SOLUTIONS

---

Welcome to Digital Star, your trusted partner in the world of cutting-edge printing solutions. As a leading printing machines, materials, and ink authorized dealer in Riyadh – Saudi Arabia (KSA), we pride ourselves on delivering state-of-the-art technology that empowers to achieve unparalleled levels of efficiency and quality.

At Digital Star, we understand the pivotal role that printing machinery plays in the success of your operations. With a commitment to innovation and excellence, we curate a diverse range of top-tier printing machines to meet the unique needs of our clients. Our product line-up reflects the latest advancements in the industry.

As a responsible printing machines supplier, we prioritize sustainability. Our commitment to eco-friendly practices is reflected in the products we offer, promoting energy efficiency and environmentally conscious manufacturing processes. When you choose Digital Star, you're not just investing in cutting-edge technology – you're partnering with a company that values the planet as much as your success.

***Best A Grade Quality &  
Innovative Products***

## THE CJV150 SERIES DELIVERS...

High-quality printing and sharp, accurate cutting for fresh, brilliant ideas and hundreds of different applications.

## AFFORDABLE, HIGH-SPEC, HIGH-PERFORMANCE, INTEGRATED PRINTER/CUTTER

CJV150 Series integrated printer/cutter from Mimaki provides high performance, creativity and versatility with vibrant ink types, including new Silver, Orange and Light Black, in a cost effective package for signmakers, display graphics professionals and printshops

### CJV150 series delivers • • •

- Fast printing speeds up to 56.2m<sup>2</sup> per hour
- High quality print resolution of up to 1,440dpi
- Four different printing widths: 800mm, 1,090mm, 1,361mm and 1,610mm
- Choice of multiple eco-solvent and dye sub ink sets:
  - 10-colour options (SS21) featuring; Silver, Orange, Light Black & White inks
  - Vibrant 4- or 6-colour dye sub options (Sb53/Sb54)
- Nozzle Check Unit (NCU) and Nozzle Recovery System (NRS) ensure continuous print operations
- UISS and optional MBIS on board 2 litre bulk ink system
- 3-way intelligent heater

SOLVENT & DYE SUB INKS

4 PRINT WIDTHS AVAILABLE

1,440DPI MAX RESOLUTION

56.2m<sup>2</sup>/h MAX. SPEED

MAPS3 PRINT ENHANCEMENT FUNCTION

**Create ...** Metallic stickers, Decals, Die-cut labels, Signage, Vehicle graphics, Banners, Posters, PoS, Back-lit & Exhibition graphics, Garment marking, Canvas prints and much more...

## SILVER INK (For brilliant metallic effects)

Newly developed SS21 silver ink is available. Being 1.67\* times brighter than conventional silver inks, SS21 ink adds brilliant and beautiful mirror effects to print results.

\*Obtained from comparison measurements of SS21 and ES3 silver inks conducted at the Mimaki HQ

Silver colour added to catch copies and logo strikes a profound impression on the viewers, which makes silver printing very appealing

The intensity of brightness in the silver ink varies as per the viewing angle. Such a high level of brightness attracts the viewer



## Orange Ink (Faithful colour reproduction)

Newly developed SS21 silver ink is available. Being 1.67\* times brighter than conventional silver inks, SS21 ink adds brilliant and beautiful mirror effects to print results.

\*Obtained from comparison measurements of SS21 and ES3 silver inks conducted at the Mimaki HQ







## Light Black Ink (greater definition)

The light black ink improves the printed grayscale gradation. It also faithfully represents monochrome data without introducing unexpected colour shifts. Light black ink ensures a more accurate colour representation.

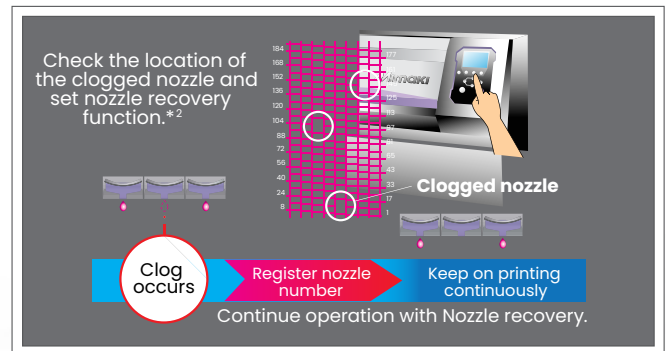
## EASE OF USE

### Productivity maintenance - NRS\*<sup>1</sup>

The NRS substitutes defective nozzles with non-defective nozzles until the technician arrives. This feature enables uninterrupted print operations and continuous productivity.

\*1 NRS: Nozzle Recovery System

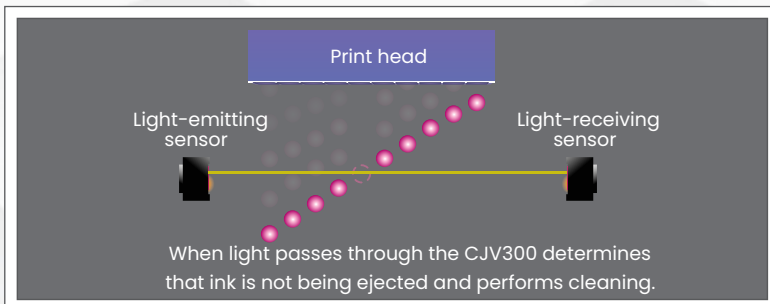
\*2 10 nozzles per nozzle row can be registered.



### Prevention, print quality problems - NCU\*

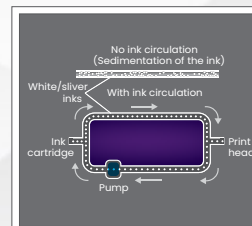
The CJV150 is equipped with Mimaki's original automatic NCU. Clogged nozzles are automatically detected and cleaned by the NCU. If the clogging is not resolved by cleaning, the CJV150 automatically sets the nozzle recovery function NRS and resumes printing. These functions significantly reduce the waste printing caused by clogged nozzles during a continuous printing run.

\* NCU: Nozzle Check Unit



### Stable printing using the ink circulation system - MCT\*

MCT is a standard feature included to effectively avoid the settling of white and silver pigments in the ink lines by regularly circulating the ink. It prevents print troubles and enables stable output from the start of operation. In addition,



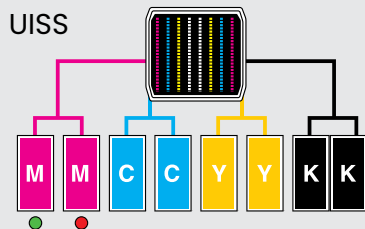
MCT contributes to reduction of ink waste, thereby supporting environmentally and economically friendly applications.

\* MCT is only available for white and silver inks. (MCT = Mimaki Circulation Technology)

## HIGH PRODUCTIVITY

### Uninterrupted Ink Supply System (UISS)

Utilises two cartridges per colour in 4-colour mode. When one cartridge runs out of ink the system switches automatically to the second cartridge of the same colour, enabling long unattended printing.

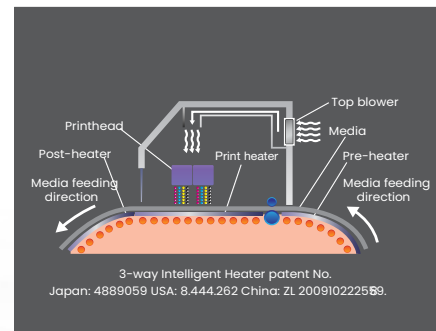


When the ink cartridge runs out of ink, the indicator will light up red, while the system already switches automatically to the second cartridge of the same color

### 3-Way intelligent heater

A 3-way intelligent heater fixes droplets placed on media. By using Mimaki's original technology in heating the media at a controlled temperature, ink can be fixed while maintaining high colour development and high image quality. Thus the CJV150 provides both steady colour development and easy handling after printing.

- Pre-heater: Heats media to the optimum temperature before printing.
- Print heater: Dries ink after it lands on media before it bleeds, improving colour development.
- Post-heater: Enhances ink drying and achieves stable take-up.
- Top blower: Air blower supports drying of ink.



## BEAUTIFUL OUTPUT

### MAPS3 (Mimaki Advanced Pass System 3)

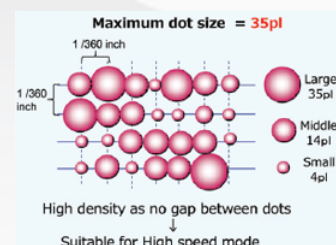
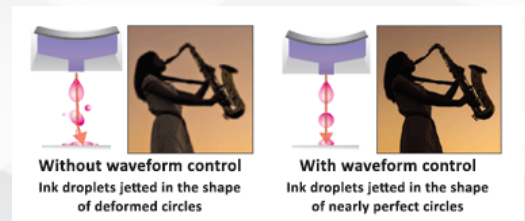
Reduces banding by dispersing ink drops between passes

### Waveform Control Technology

Ensures high quality print resolution, by jetting ink drops in straight lines with almost perfect round dots, delivering clear and sharp letters, lines and edges.

### Large ink dot size in high speed mode

Delivers high density print by removing the gap between dots.



## VERSATILE PRINT & CUT FUNCTION

The multiple functions of the CJV150 models ensure high-quality printing and high-accuracy cutting enabling the production of labels, stickers and vehicle wraps with ease.

### Continuous-register mark-detection function enables continuous media cutting.

The CJV150 automatically detects all register marks set by RasterLink6 on the media, and cuts contour lines precisely by utilising simultaneous automatic calibration.

#### Print and cut on no-register mark media / Cut and print function

Media up to 1m in length does not require register marks, reducing media wastage.

#### Segment correction function facilitates precision cutting over longer-length prints.

This function detects intermediate register marks and enables four-point corrections for each segment to ensure accurate contour cutting over longer-length prints, even if the image is distorted.



### Over-cut and corner-cut functions ensure clearly cut edges with no residues.

The over-cut function ensures sharply cut edges with no residues by making a cross cut at the start and end positions of the contour cutting. The corner-cut function ensures sharply cut edges by making cross cuts at each corner.

### Clamp-pressure automatic-switching function enables continuous operation.

The pressure of the media clamps is automatically optimised for printing and cutting. No pressure adjustment by the operator is required during continuous operation.

### "Cut and Print" function improves the workability of thin materials.

This function prevents common problems, such as film separation and faulty cut results, by cutting the media before printing.

### Versatile cutting methods satisfy a range of market demands.

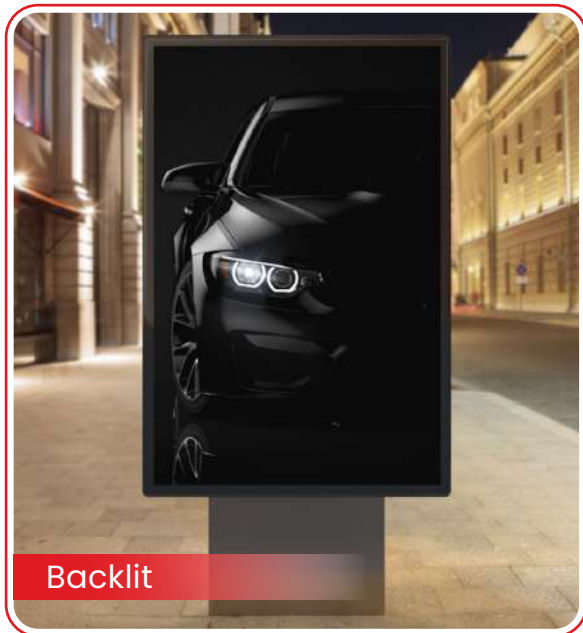
"Half-cut" produces a series of half and die cuts, leaving a few connection points that retain the printed image on the medium.

"Die cut" completely cuts the printed image from the medium. "Perforation cut" is useful for clipping images from the medium, used as crease lines.





# Product Samples



Product  
Samples



## Specification

Print Head	On-demand piezo head	
Print Resolution	360 dpi, 540dpi, 720dpi, 1080dpi, 1440dpi	
Maximum print width	800mm	
Maximum media width	810mm	
Ink	Type/ Color	<b>Solvent Ink</b>
		SS21 (C, M,Y, K, Lc, Lm, Lk, or W, Si)
		ES3 (C, M,Y, K, Lc, Lm)
		BS3 (C, M,Y, K)
		BS4 (C, M,Y, K)
		<b>Water-based sublimation ink</b>
		Sb53 (Bl, M, Y, K, DK, Lb, Lm)
	Sb54 (Bl, M, Y, K)	
	Package Size	SS21: 440ml Ink Cartridge/2L ink pack* (W & Si: 220ml)
		ES3: 440ml ink Cartridge
BS3: 600ml Ink Pack/ 2L Ink pack*		
BS4: 600ml Ink pack/ 2L Ink pack*		
Sb54: 2L Ink pack*		
Circulation System	MCT (Mimaki Circulation Technology) (Only applies to white and silver inks)	
Media thickness	1.0mm or less	
Rolled media weight	40kg or less	
Certifications	VCCI class A / FCC class A / ETL UL 60950	
	CE Marking (EMC, Low voltage, and Machinery directive) / CB	
	RoHS / REACH and Energy Star / RCM	
Interface	USB 2.0, for E-mail notification function	
Power supply	Single-phase (AC 100–20V / AC 220–240V)	
Power consumption	100V: 1.44 kVA × 1 or less, 200V: 1.92 kVA × 1 or less	
Oper. environment	Temperature: 20–30 C (59–86 F), Humidity: 35–65% Rh (Non condensing)	
Dimensions (W × D × H)	1,965 × 700 × 1,392mm	
Weight	126kg	

\*Specifications are subject to change without prior notice, all rights reserved

## Supplies

Item	Colour		
ES3	Cyan	SPC-0440C	440ml Ink cartridge
	Magenta	SPC-0440M	
	Yellow	SPC-0440Y	
	Black	SPC-0440K	
	Light Cyan	SPC-0440LC	
	Light Magenta	SPC-0440LM	
SS21	Cyan	SPC-0501C	440ml Ink cartridge
	Magenta	SPC-0501M	
	Yellow	SPC-0501Y	
	Black	SPC-0501K	
	Light Cyan	SPC-0501LC	
	Light Magenta	SPC-0501LM	
	Orange	SPC-0501Or	220ml Ink cartridge
	Light Black	SPC-0501Lk	
	White	SPC-0504W-2	220ml Ink cartridge
	Silver	SPC-0504Si	220ml Ink cartridge
	Cyan	SPC-0588C	2,000ml Ink pack
	Magenta	SPC-0588M	
	Yellow	SPC-0588Y	
	Black	SPC-0588K	
	Light Cyan	SPC-0588LC	
	Light Magenta	SPC-0588LM	
Orange	SPC-0588Or		
Light Black	SPC-0588Lk		

Item	Colour	600ml Ink pack	2,000ml Ink pack
BS3	Cyan	SPC-0667C	SPC-0693C
	Magenta	SPC-0667M	SPC-0693M
	Yellow	SPC-0667Y	SPC-0693Y
	Black	SPC-0667K	SPC-0693K
BS4	Cyan	BS4-C-60	BS4-C-2L
	Magenta	BS4-M-60	BS4-M-2L
	Yellow	BS4-Y-60	BS4-Y-2L
	Black	BS4-K-60	BS4-K-2L

Item	Colour	440ml Ink cartridge	2,000ml Ink pack
Sb53	Blue	SB53-BL-44	SB53-BL-2L
	Magenta	SB53-M-44	SB53-M-2L
	Yellow	SB53-Y-44	SB53-Y-2L
	Black	SB53-K-44	SB53-K-2L
	Deep Black	SB53-DK-44	SB53-DK-2L
	Light Blue	SB53-LBL-44	SB53-LBL-2L
Sb54	Light Magenta	SB53-LM-44	SB53-LM-2L
	Blue		SB54-BLT-2L
	Magenta		SB54-MT-2L
	Yellow		SB54-YT-2L
	Black		SB54-KT-2L

\*1: White and silver are provided in 220ml Ink cartridge only.

\*2: Optional MBIS (Mimaki Bulk Ink System3) is required for using 2L Ink pack.

## SYSTEM REQUIREMENTS (PC's)

Operating System*	Windows 10 (64 Bit) or Later
Processor	i7 - 2.6 GHz or faster
Memory (RAM)	Min. 8GB or More
Video Card and Monitor(VGA)	1280x1024 or Higher Resolution is Recommended
Working Hard Disk Space	1 TB SSD or more recommended
Graphics Card	2GB or more (Optional)
Optical drive	DVD-ROM
Other requirements	Ethernet connection for network capable printers
	Available USB ports and PCIE Slot
Recommended Brand	Lenovo / Dell

\* Note: You can use a laptop or desktop computer

\* Use the original operating system and software. If you are using pirated operating system or software, we are not responsible for any damage to Machine workings, and also the warranty terms will become void.

## POWER REQUIREMENTS

Voltage Regulator	5000W Stabilizer
-------------------	------------------



# CJV150-75

High-Specification Entry Model



## Terms and Conditions

01. Payment to be made in SAR currency.
02. Payment Terms : As mentioned in Quotation.
03. Bank Charges: Any bank charges relevant to the above transactions will be to your account.
04. Any charges, duties, taxes or levies at the ports of entry will be to our account.
05. The charges of loading, boarding and local conveyance of the technician will be to our account.
06. Any required electrical, mechanical and civil site preparation should be done by the customer according to our engineer's requirements.
07. Digital Star Machinery and Equipments will not be held responsible for delays caused by any damage in the equipment due to shipment, unloading accidents & any related reasons, which is beyond our control.
08. Warranty will be 12 months from the date of installation from Digital Star Machinery and Equipments. Wear and tear, consumables are exempted and warranty can be claimed only if you use the Inks and Services from Digital Star Machinery and Equipments.
09. Service will be free of cost within 12 months from the date of installation.
10. Any claim will be invoice directly to you then we will send for claiming procedure which will take 45-60 days, if the claim got approved credit note will issued directly.
11. Delivery: As mentioned in quotation

## شركة النجم الرقمي للألات و المعدات DIGITAL STAR MACHINERY AND EQUIPMENTS

IBN AL SAQA 8162 | AS SALHIYAH DIST | RIYADH - 12662



+966 11 229 4473



info@digitalstarksa.com



+966 11 229 4473



www.digitalstarksa.com